



Into Our Hands

Community Foundation

Annual Report 2021



Table of Contents



OUR VISION

Community Capacity
For Good, For Ever

OUR MISSION

We activate local assets and prosperity, inspire giving, and unite motivated people to build a capable and resilient North East Victoria.

OUR VALUES

Empowerment, Transparency, Courage, Collaboration,
Responsiveness.



Into Our Hands Community Foundation acknowledges Aboriginal and Torres Strait Islander peoples as the first inhabitants and traditional custodians of the lands on which we live and work. We pay our respects to all Elders past, present and emerging.

1. Chair's Report	4
2. Executive Officer's Report	6
3. Our Board	8
4. Our Sub-Funds	10
5. Our Giving History	12
6. Our Year of Giving 2020/2021 Grantees	14
7. Grantee Spotlight	16
8. Our Prosperity Realised	18
9. Our Entities Explained	22
10. Our Structure	24
10. Our Financial Reports	26

Chair's Report



— RUTH KNEEBONE

ON THE TRANSFER OF WEALTH PROJECT

“

We could see what was achieved for local communities through the campaign in the US and we wanted to dream big for the North East. We too, imagine a community where our children and grandchildren can access local support when needed which has come from the community, for the community.

—



It is my privilege to prepare this report for Into Our Hands Community Foundation for the 2020/21 year. It's been a year when we have truly focused on our strategic goals, to:

- Grow our fund
- Trusted and well governed.
- Invest in the community

GROW OUR FUND

This year we have focused on numerous ways to build our public and open funds. We are delighted with the growth of the Give Wangaratta Sub-Fund, launched in 2019 as we work towards our second pitch-up event to support three local charities in the Wangaratta region. This event will be held in early 2022 with support from the Jack Brockoff Foundation, June Canavan Foundation and Rural City of Wangaratta. Coupled with the Garry Nash & Co Community Fund, the Wangaratta region has a bright future of generous support for community wellbeing.

There is also community interest in establishing two new community-based funds in the Alpine Shire. Through the generous support of the Ecstra Foundation we have increased our capacity to deliver on the Our Prosperity Realised project, based on creating awareness about the potential for leaving a legacy by carefully considering intergenerational wealth transfer.

TRUSTED & WELL GOVERNED

The Board have come together several times this year. Our needs to remain financially sustainable, impactful and relevant. The board and our staff are working towards those objectives through a new donor and sponsorship plan.

We have also worked on governance; a fund development plan and targets and the Board are reviewing our investing approach. This will deliver income on the corpus and grow the grant budgets.

INVEST IN THE COMMUNITY

To invest in our community, we partnered with Amer Sports to deliver a grants program to bush-fire and Covid-19 affected communities delivering grants in the region. This provided \$37,500 in funding direct to community projects and organisation supporting these casues.

We have also maintained our support for the FRRR back to school program delivering over \$27K in vouchers across North East Victoria in 2021, our biggest year in 10 years!

Our operational capacity has been strengthened through support from the Helen Macpherson Smith Trust, the Global Giving Wildfires Fund, Community Enterprise Foundation, the Alpine Shire Council and Rural City of Wangaratta.

Thank you to our board members who give their time and expertise so willingly. This year we welcomed new board members Jodie Wells, Bart Crawley, Roberta Baker and Megan Buntine, and we will farewell Anita Smith from our Board at our 2021 AGM. Particular thanks go to our Vice Chair, Fiona Nicholls who represented us as chair of the Alpine Community Recovery Committee. We are also grateful for the skills of our board Secretary, John Bailey and our founding board member, Loretta Carroll.

Thank you to our donors for your generosity, and for choosing a local fund to invest in your community.

Finally, I thank our Executive Officer, Sarah Thompson for her commitment and energy, and our staff members Peter and Emma for their dedication to this Foundation.

RUTH KNEEBONE
Board Chair

Executive Officer's Report



I wanted to begin my report this year with sincere thanks to Peter and Emma, my colleagues at the Into Our Hands Community Foundation. Peter joined the team in June 2020 and with Emma in April 2021, together we have delivered some great results based on the full time equivalent of 1.5 staff.

During another uncertain year of lockdowns and changing work circumstances and priorities, the team have shown commitment and passion to their work. I also want to express my thanks to the dedicated Into Our Hands Board members and Directors. As volunteers, they have supported the team and been responsive to the changing needs of the Foundation and helped to realise the rise in donations and community profile that we have achieved over the past twelve months.



— SARAH THOMPSON



2020 / 2021 HIGHLIGHTS

The Foundation has grown to 6 Named Sub Funds with three new funds added in 2020/21. Detail of the new funds can be found on page 11. Given we have spent the last 18 months in and out of lockdowns and living with ongoing Covid-19 restrictions we have seen received \$120,000 in donations this financial year. This is a great start to our fund development activities and campaigns that we intend to support over the next 5-10 years.

I welcome our new donors and thank them for choosing Into Our Hands as the local vehicle to give back to their community. I also want to acknowledge our many existing donors to the Public Fund, Give Wangaratta and Mount Buffalo Chalet.

This year, we continued the 'Our Prosperity Realised and "What could you do?" campaigns taking our transfer of wealth study on the road and online and sharing the giving potential and opportunity for North East Victoria. We have held two local lunches for professional advisors, held online training webinars and discussions and briefed all our local government area's and councils on the data. This has supported new interest in new placed based funds. Our team is working to follow up and support those towns to explore how they can activate locals and local assets for giving.

The story of our granting year is covered from page 13 . We have successfully delivered over \$90,000 in grants during the financial year supporting 18 organisations.

In terms of direct community support, we have developed a project to support volunteer resilience coming out of the Covid lockdowns and this has been generously funded by Jack Brockhoff Foundation. The project has met some challenges to bring volunteers together but with restrictions easing we hope to resume that work in 2022 . Lastly, our support for local non profits and volunteer groups remains and we have provided numerous phone calls, meetings and ideas to many groups seeking and looking for funding advice. We aim to be that trusted support for our community and volunteer groups help them achieve their goals.

Our focus on capacity building, governance and systems has remained and I'm very proud to talk about our achievements across the foundation in these areas. Since last year, we have implemented a new online donor and contact management system and developed a new website which will be launched in the new year. These new communication tools make our sub fund and donor management much easier and provide us with necessary software to develop and grow the foundation over the next five years.

THANK YOU

Thank you to the many partners and supporters of the Foundation. We have enjoyed the new office space in the Wangaratta Digital Hub since January 2021 and have loved having a central space for meetings and team discussions. Thank you to sponsors and donors from Rural City Of Wangaratta , Alpine Shire, June Canavan Foundation, Jack Brockhoff Foundation, Helen Macpherson Smith Trust, Ecstra Foundation and Madge Brown Charitable Trust. Their support has made way for much of the work reported on above and gives us the resourcing to staff those activities.

We are also grateful to North East Funerals and the Myrtleford Chamber of Commerce for their support of our events. Lastly, we appreciate the pro bono legal advice and support that is provided by Alice Macdougall from Herbert Smith Freehills.

I love working locally and surrounded by others who have the same passion and drive for positive outcomes and changes across our region. I feel privileged to lead an organisation with a strong vision for North East Victoria. Next year we celebrate 10 years as a foundation as we look to the next chapter of growth. With the growing groundswell of community support and donations, we will achieve so much for our towns and communities if we continue to pool our efforts, resources and assets for the good of the region. #whatcouldyoudo?

SARAH THOMPSON
Executive Officer

Our Board



The Into Our Hands Community Foundation Board is made up of eight individuals who reside in different parts of the North East.

Each our of directors brings their own skills and expertise to the mix, but together they are a group of like minded, passionate locals who believe in the foundations ethos and wish to make a lasting impact on their local community.



RUTH KNEEBONE, CHAIR

Ruth joined the board as chair in 2019, after the inaugural chair stepped down. With a career spent working in local government and accounting sectors. Ruth brings a vast set of skills to her role as committee chair including governance, risk, finance, information services, and media and communications. Ruth is passionate about helping the Foundation's work to ensure we can access community support when needed.



FIONA NICHOLLS VICE CHAIR

Fiona joined the board in 2019. Encompassing 30 years in the global resources industry, Fiona has worked across a range of business functions including strategy and planning, due diligence and assurance processes, crisis management, and organisational change. Fiona has had experience on multiple public and private boards. Fiona has extensive knowledge and expertise in environmental management and community development. She brings her depth of corporate social responsibility and community grant-making experience to her board position.



JOHN BAILEY, SECRETARY

John joined in 2018 after attending the Annual General Meeting. With a strong local business and real-estate background John has held a career in body corporate management and real estate. John brings with him a strong background in governance, finance and community networks. He has served on multiple community and corporate boards over the years he is also a current Director for REI Super.



BART CRAWLEY, TREASURER

Bart joined the board in early 2020. He brings years of experience in all aspects of commercial and social purpose organisations, and a passion for people centric leadership. Bart studied business, leading onto a 26 year career in senior leadership in the taxation, business consulting and manufacturing sectors. Bart currently works as the CEO of one of Australia's leading Disability Enterprises, Merriwa Industries Ltd.



ROBERTA BAKER

Roberta joined the Board in November 2020. Her work experience over many years in Australia and the UK, in the private and public sector and her broad travel experience, has involved stakeholder engagement, communication, advocacy, leadership development and empowerment. Her absolute passion is enabling people of all cultures to develop the skills and confidence to take on advocacy and leadership roles that help strengthen their community, to break down barriers and to make their community more resilient; to take charge of their future. Roberta believes in the power of community to bring about positive change at the grassroots level.



JODIE WELLS

Jodie joined the board in 2020. Jodie's strong sense of community has arisen from a life-long connection to north east Victoria. Born and raised in the area, her love of small communities led to her serving on the boards of many local community organisations over the years. With more than 14 years practicing law in our community, Jodie has spent the last four in the community justice sector, helping vulnerable and disadvantaged clients get their lives back on track.



LORETTA CARROLL OAM

Loretta was a Community Advisory Committee member of the Victorian Bushfire Appeals Fund in 2011. Loretta is the founding chair of Into Our Hands Community Foundation since 2012. She received the National Emergency Medal after the 2009 Victorian bushfires and has been a finalist in the Bluescope Leadership Innovation Award at the Regional Achievement and Community Awards. She is a Director of the Cattle Producers Australia (CPA) Board. In 2021 she was awarded an order of Australia for her contribution to community organisations and her dedication to the Into Our Hands Community Foundation.



MEGAN BUNTINE

Megan joined the into our hands Board in 2021. Megan's background includes a 25 year career working in the disability sector, nearly 20 years running a boutique tourism accommodation business, and more than 10 years working as a governance consultant on projects with government and not-for-profit organisations. She has served as a board member for a number of organisations, including the Kinglake Ranges Foundation, Alexandra District Health, the Victorian Public Tenants' Association, and the Rivers and Ranges Community Leadership Program, as well as many smaller local community groups.

Our Sub-Funds



— MARION NASH

GARRY NASH & CO COMMUNITY FUND

“

“In June 2021, we established the Garry Nash & Co. Community Fund to commemorate our 40 years in business anniversary. We could think of no better way to continue our philanthropy than by establishing a fund that will operate in perpetuity and have the capacity to provide meaningful grants and donations to our community for housing and homelessness, natural disaster relief, health and wellbeing and education.”

”



GIVE Wangaratta

The fund is overseen by a local advisory group made up of Wangaratta residents. Funds raised are managed and stay in our local community.

GIVE Wangaratta is a community wide initiative to establish a charitable endowment fund for the long term needs and future of Wangaratta, its people, community groups and local non profits.

The initial goals of the GIVE Wangaratta initiative is to raise enough funds to create an endowed fund that can support grant-making annually.

Grant making will support a range of charitable causes and organisations that are priorities for local people, with particular focus on those that are vulnerable, young people and families.



Garry Nash & Co. Community Fund

Garry Nash and Co. have a long standing history of supporting the local community. To commemorate their 40 year business anniversary they established the Garry Nash & Co. Community Fund in June 2021

The Garry Nash & Co. team are excited to continue their philanthropic journey and the ability to offer their clients the opportunity to support the community on a bigger scale.

Garry and Marion's vision for the Sub-Fund is to assist projects in the areas of Housing and Homelessness, Natural Disaster Relief, Health and Wellbeing and Education.



Mt Buffalo Chalet

Often referred to as 'The Grande Old Dame of Victoria's Alpine region' the incredibly picturesque Mount Buffalo Chalet is perched on the top of Bent's Lookout, with breathtaking views that stretch out over the famous Gorge.

The Sub-Fund is overseen by a group of passionate like minded locals who are taking action to ensure that this iconic landmark in the north east is preserved for future generations.



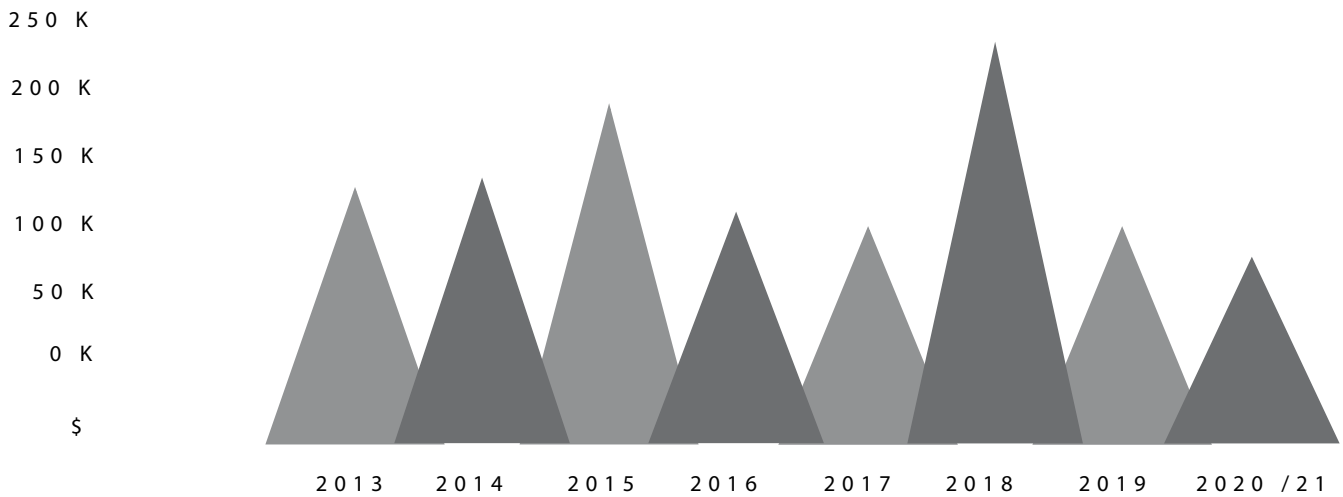
Bushfire Support, Relief and Recovery Appeal – North East Victoria

This Sub-Fund continues to provide much needed funds in times of disaster relief specifically to aid recovery from bushfires.

Through this fund we have coordinated activities and funded projects to the value of over \$910,000 that have supported local CFA brigades with equipment and firefighting needs, we have also supported community groups and facilities to rebuild and have funded projects that bring tourism and visitors back to the region in places such as Harrietville, Myrtleford and Beechworth.

We believe that this Sub- Fund is vital, as it provides local communities the means to support local bushfire response and recovery needs now and into the future.

Our Giving History





Since commencing in 2012, Into Our Hands Community Foundation has provided over \$1,007,950 back to North East Victorian communities, projects and charities.

Much of this was made possible through the Victorian Bush fire Appeal Fund from the Black Saturday fires but increasingly in the last two years, we have been able to continue grant making through donor and funder support for our programs and activities.

Since 2019, we have been building our corpus and endowed funds to support our grant making for the long term and we have launched several new community funds to support these efforts and grow local philanthropy.

Our 2020/21 was one of our biggest years of community giving, seeing the foundation raise \$120,000 in direct donations for our grant making programs and local funds. We expect to grow this figure over the coming year to build up the investments we can make back to our community.

What could you do for your community?

Into our Hands have now embarked on a long term campaign to grow giving and activate more donors in our region.

We are encouraging people to think about what they can give to local charities or what percentage of their estate they could leave to a worthy local cause at the end of their life. We are creating a vision for those funds and that legacy to encourage more donors to come forward.

You can support the work of the foundation and our direct community grant making by supporting one of our existing funds or speak to us today about other ways to contribute and

DONATE TO THE
PUBLIC FUND HERE



Our Year of Giving

2020 & 2021 GRANTEES



EVENT GRANTS



EDUCATION GRANTS



TECHNOLOGY GRANTS



SUSTAINABILITY GRANTS



SOCIAL IMPACT GRANTS



* GRANT TO TOTALLY RENEWABLE YACKANDANDAH.
COMMITTEE PROJECT FOR RENEWABLE ENERGY

Alpine Valley Community Leadership	This was the final installment for the AVCL Community Scholarship that Into Our Hands has supported for 3 years. The funding provides a place for a community person or non-profit community organisation volunteer or staff member to access the prestigious leadership program.	\$5,750
Anglicare	Funding to ensure that material and financial aid is available in Bright and Mount Beauty to support community members who are impacted by the bushfires and Covid-19 Pandemic.	\$2,500
Beechworth Secondary College	A project connecting Beechworth Secondary College and local musicians and artists affected by Covid-19 lock-downs. Together creating a production called "Beechy sounds" giving the students and community locals the opportunity in interact together and create music.	\$2,500
Charlie Vincent	This project in Bright supported the development of car wildlife kits to help rescue local wildlife injured on local roads.	\$1,250
Dedarang Picnic Races	Event operation support of the races. An event that creates memorable experiences and makes a positive impact in the local community.	\$1,250
Dinner Plain Environmental Workshop	A workshop to raise awareness of the unique environment in Dinner plain particularly the flora and fauna of the Alpine bogs. To inspire the development of a community group to rehabilitate and manage the area to eliminate invasive weeds and replant in vulnerable areas.	\$1,000
First Fall Films	Funding to assist with production cost for a documentary Film based in Mount Hotham and Falls Creek, marketing the mountains to bring the "freeride tour" to Australia. Which benefits both public and economic development outcomes in the Alpine area.	\$1,500
Mountain Safety Collective	Establishment of Avalanche Beacon training at Mt Hotham and support back country and avalanches safety awareness in the alpine areas.	\$2,500
Mt Beauty Golf Club	A landscaping project to remove large Radiata Pine trees and replace with local native species, to both improve the effectiveness of a green fire break and increase local biodiversity assisting with bushfire preparedness.	\$2,500
Mt Beauty Mens Shed	Funding support for IT upgrade for a dedicated desktop computer for the Men's Shed.	\$2,500
Mt Beauty Neighbourhood Centre	Mt Beauty Emergency Relief Space Project . The funding supported fit out and office costs of the Mount Beauty Neighbourhood Centre to be able to run more efficiently and provide important services relating to emergency and disaster assistance.	\$2,500
Myrtleford Men's Shed	Support for increased participation and volunteer engagement in their programs	\$1,000
Our Move Helping Hands	Support for an online website that includes a variety of tasks on an online notice board posted by struggling Australians needing help to prepare their homes for bushfires,	\$1,500
Porepunkah CFA	This grant was for community event support and enabled the Porepunkah CFA to host a volunteer recognition dinner	\$2,500
Traverse Hotham	Covid-19 relief funding package that allowed the organisation to offer locals free cross country ski lessons and support local access to the sport.	\$2,500
Vic Back Country	Funding to allow locals the access the festival at a subsided rate.	\$1,500
Winterwords Beechworth	An annual series of events over 6 days which aims to foster the celebration of words in all their forms and functions, and includes writers and writing, visual and performing arts, literature, poetry, storytelling, games, and music.	\$5,750

Grantee Spotlight

2020 & 2021



I have met a wide range of fabulous people engaged in community projects in my local region



Helen Sellar
Alpine Valley Community Leadership Program →

From funding obtained from Into Our Hands, Helen was awarded a scholarship to participate in the Alpine Valley Community Leadership Program. The annual program provides pathways for leadership training which is delivered locally within North East Victoria and the border region.

The program offers a range of courses for emerging leaders taking the first steps towards leadership roles, through to accomplished leaders looking to refine their skills and knowledge.

Helen is an active member of her community and has been involved as a volunteer and board member in many local organisations including schools, sporting clubs as well as the Albury/Wodonga Women's Centre and the Beechworth Food Co-Op.

Helen recently shared the key highlights of being involved in the program: " I have learned a range of practical skills in relation to participation within my local community and I have met and heard from many 'experts' and individuals with wisdom from many different industries and sectors across the region"

— HELEN SELLAR

2021 INTO OUR HANDS
FOUNDATION SCHOLAR



Beechworth Secondary College Beechy Sounds Project with This Way North

The Beechworth Student cohort missed out on so much due to Bushfires and Covid restrictions. Teachers reported that students had little to share, the small rural community offered little engagement and opportunities for connections and entertainment and engaging cultural events

There was no music or creative activities to join, attend or learn from. Along with this, there were no options to bring visiting performances to the school. Since the fires and Covid impact hit the community, there was significantly less money available to families to attend performances.

The school realised that setting up opportunities for young people to interact together in a positive manner and learn social skills involved working together to create music - a key way to promote wellbeing. With music students having no opportunity to play, rehearse, perform and share their skills, and local musicians not being able to travel and perform, Beechworth Secondary decided to develop a production called 'Beechy Sounds'.

This collaborative project between, teachers, students and local musicians was complemented by a series of follow up workshops enabling students be involved in a positive project on their return to school helping their wellbeing whilst giving local musicians employment in their local community.

Traverse Hotham Free XC Ski Lessons Project

With the snowfields decimated by Covid-19 lock-downs, this cross country ski school took the opportunity to obtain funding and offer locals free cross country ski lessons and support local access to the sport.

The usually vibrant winter seasonal communities of Hotham and Dinner Plain villages were decimated by the lock-down of season 2020. Hotham and Dinner Plain were ghost towns - even the minority of 'seasoners' lucky enough to be 'on mountain' were unable to socialise or maintain the usual threads of community. Though successfully obtaining a Covid-19 relief grant, this ski school was able to offer locals free cross country ski lessons.



Our Prosperity Realised Project: THE PHILANTHROPIC POTENTIAL IN NORTH EAST VICTORIA

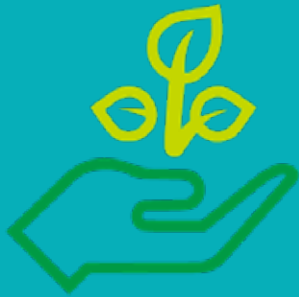


Our Prosperity Realised is Australia's first wealth transfer report inspired by the progress of community philanthropy in regional parts of the United States. Published in late 2019, the report is the first of its kind in Australia to document wealth in place and discuss the opportunities for growing local and place based philanthropy in North East Victoria.

Stemming from the report is the campaign and project to grow community awareness and understanding of this opportunity among key groups including; local charities and non profit organisations, potential donors, high net worth locals and visitors to the region, business, industry, professional advisers and estate planners. It is these key groups who may have capacity for more local giving and who may have an interest in giving back to the places they love.



Over the 50 years North East Victoria is set to transfer \$17.5 Billion to the next generation



If everyone in our region gave just 5% of their estate to the Into Our Hands Community Foundation over the next 10 years, that could result in \$125 Million in donations! Imagine the difference that kind of money could make in our community.



Giving 5% to the community is possible for many residents in north east Victoria



During 2020-2032, Into Our Hands has picked up the pace on the Our Prosperity Realised project thanks to key funders, Ecstra Foundation, FRRR and June Canavan Foundation. During the year we have delivered the following activities:

- Design of first Transfer of Wealth campaign and roadmap for community engagement in Australia. Preparations of media and campaign resources for all key stakeholders.
- 13 training sessions with approximately 221 people from Professional Advisors, councils, community groups and non-profit sectors groups to grow understanding of the opportunity and encourage structured giving.
- A training webinar for Transfer of Wealth and local events for professional advisers including tailored resources.
- The first Transfer of Wealth mini site linking local data sets to a case for giving accessible to all
- Establishment of the community foundations national transfer of wealth community of practice group, where other groups trialling this approach share information and achievements/challenges
- Digital Stories project to create new engaging digital content in line with our branding, messaging and the Transfer of Wealth campaign, commenced in June 2021 and still underway through partner, North East Media.

KEY ELEMENTS OF A TRANSFER OF WEALTH CAMPAIGN

Transfer of Wealth Opportunity Analysis provides an estimate of a region's assets homes, businesses, investments - that will transfer between generations withing the next 5 and 50 years.



It highlights that a region or area has assets and wealth to spare and activate for charitable giving.



This data allows you to change the conversation about structured giving and promote the opportunity as a way for community to realise some of these assets for their benefit.



The time for planning is now, help communities understand the opportunity and set up structures and campaigns to capture giving locally



Highlight the need in your community and develop localised campaigns to make it simple and easy for local people to make a gift to those needs.

Our Prosperity Realised Project:

THE PHILANTHROPIC POTENTIAL IN NORTH EAST VICTORIA

OUR IMPACT SO FAR



- NEW DONORS & NEW RELATIONSHIPS BEING BUILT WITH COMMUNITIES
- INCREASED PROFILE: MEDIA COVERAGE & SUPPORT
- IMPROVED STAFFING CAPACITY FOR MEDIA & COMMUNICATIONS & COMMUNITY ENGAGEMENT
- NEW DIGITAL CONTENT & CONSISTENT VALUES BASED MESSAGING TO SUPPORT OUR FUND DEVELOPMENT & CAPACITY BUILDING
- CLEAR MOMENTUM & TRACTION WITH THE COMMUNITY. PLAN TO MAINTAIN AND CONTINUE THIS APPROACH





THANK YOU TO OUR FUNDERS FOR MAKING THIS EXCITING WORK POSSIBLE



Our Entities Explained

2020 & 2021



During the 2020/21 financial year, the Foundation was comprised of three entities:

1. Into Our Hands Community Foundation Limited - Open Fund
2. The Trustee for Into Our Hands Public Fund
3. The Trustee for Into Our Hands Charitable Trust (established in 2019)

In June 2020 we ceased operating the original Victorian Bushfire Appeal Fund trust deed as this fund has been invested fully with our local community through our annual grants since 2012. A very small balance was rolled into the Charitable Trust at the end of last year to be used for bushfire relief, recovery and preparedness projects in relation to that disaster.

Summary

Across all three entities we can report donations of approximately \$120,000. This is largely thanks to partnerships with Global Giving for bushfire recovery grants and growing activity and newly established sub-funds within our public fund. Thanks to a renewed effort from the Into Our Hands Directors to support relationship building locally, we have successfully cultivated new donors into the foundation.

We also had a positive partnership with Amer Sports to support our Covid and Bushfire relief program. In terms of grant making across all entities, approximately, \$90,000 went out the door and back into the community through bushfire and Covid-19 relief rounds, scholarships, small grants and sub-funds distributions for Totally



Renewable Yackandandah for their community energy projects. The balance of donations has generally been retained in the public fund corpus for funds such as Give Wangaratta and Garry Nash & Co. to grow for future grant making.

We have maintained our focus on sustaining operations through regular grant writing and have secured new grants. This funding for capacity has enabled us to maintain staffing and admin support for the Executive Officer to 4 days a week ongoing. This has generally come into the Open limited and the Charitable Trust income, these entities have remained steady.

Through 2021, most activity and funding for operational costs and projects came through the Charitable Trust. Other than staffing and general capacity support from our partner, Helen Macpherson Smith Trust, the bulk of spending has come through our 'We Give North East Project' which continues with funding from Ecstra Foundation and June Canavan Foundation. We have bought a new contact management and sub-fund system, Foundant and we have also invested significantly in our systems and community messaging given our restrictions to meet and hold events during the Pandemic.

We secured funds from June Canavan Foundation and FRRR, supporting a new website. Planning of new online content and stories to grow giving, These activities which we will report on next year.

At the end of June 2021 we made a move to transition all our operating funds and grants to our

Company Limited and stop using the charitable trust for these costs and transactions. The Charitable Trust will cease its use from July 2021 and be closed during this next year.

Through our Open Fund, under the Company Limited, the Executive Officer has cultivated some new funding arrangements with donors such as Amer Sports and Jack Brockhoff Foundation which has supported us to continue our small and agile grant making in the community and support community building and volunteer resilience. We had a second gift provided by Global Giving in support of our bushfire recovery role and small grass roots grant programs which invested approximately \$42,000 in the community with this funding. Lastly, we took some funds for community activities and grants including part of the Ecstra grant supporting our We Give North East project providing training and community events and awareness of the Transfer of Wealth opportunity.

Overall revenue from grants and funds for our activities remained steady to support our current projects and staffing levels. Our corpus funds under management have increased by almost \$50,000 in the public fund indicating a good level of growth from last year with new and existing donors. However we still have work to do to reach our overall goals around sustainability of the foundation's financial model.

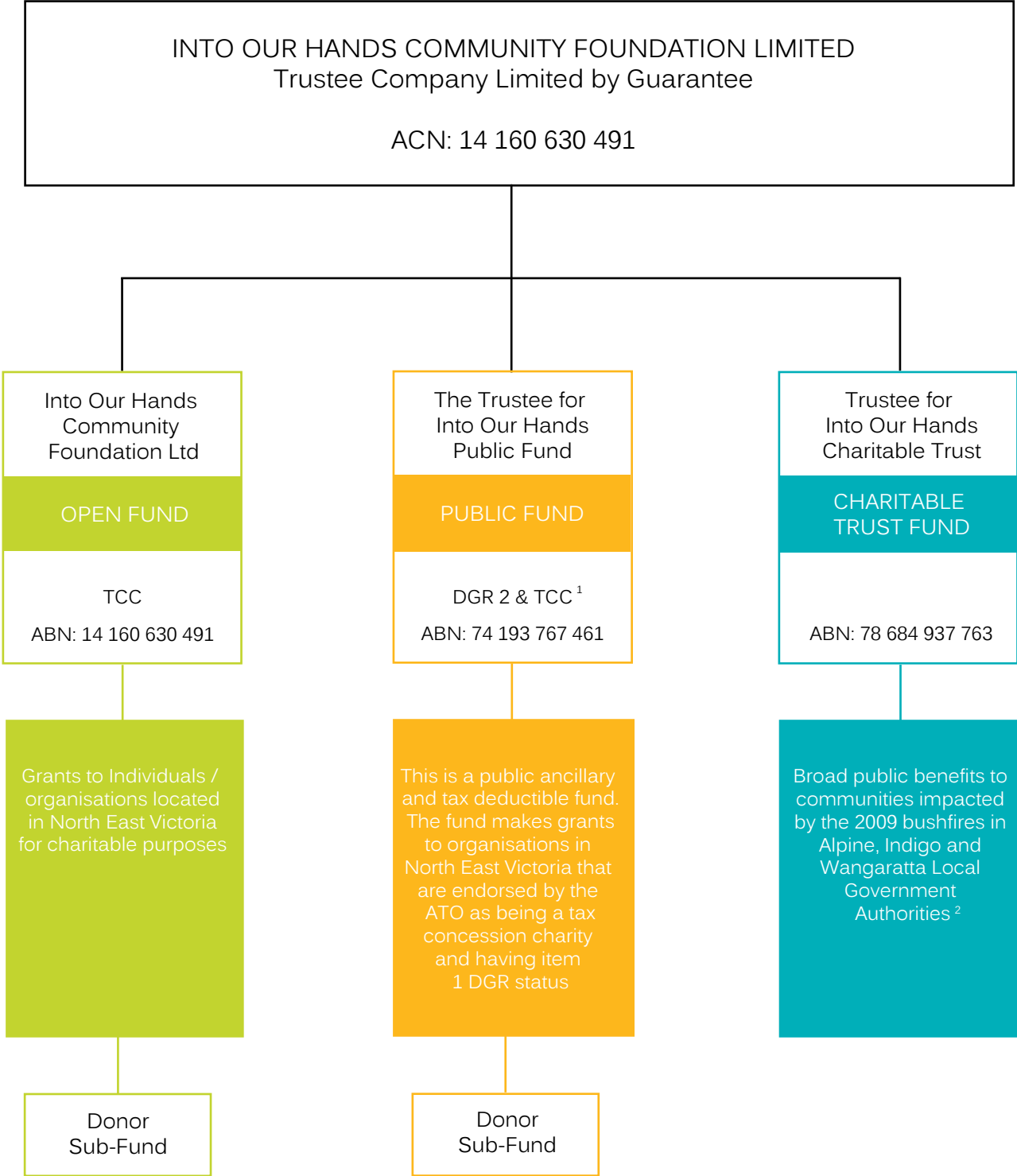
Given pandemic restrictions are easing and we have good foundations to grow from with the We Give North East project, we look forward to connecting more with our community and supporters in 2022 and continue to make small grass roots grants to local causes.

ANNUAL REPORT 2021

Our Structure



Into Our Hands Community Foundation Structure



1 DGR - Deductible Gift Receipt Status Item 2 and TCC - Tax Concession Charity
 2 Payment may be made for an eligible charity outside the named municipal districts for a charitable purpose.

Our Financial Reports



Table of Contents

1. Open Fund	28
<hr/>	
2. Public Fund	36
<hr/>	
3. Charitable Trust	46
<hr/>	

**INTO OUR HANDS - OPEN FUND
INTO OUR HANDS COMM' FOUNDATION LTD ATF
ABN 14 160 630 491**

**Financial Statements
For the year ended 30 June 2021**



AlpineTAX
PO BOX 403
MYRTLEFORD VIC 3737

Phone: 5751 1411 Fax: 5751 1416
Email: admin@alpinetax.com.au Website: www.alpinetax.com.au

INTO OUR HANDS - OPEN FUND
INTO OUR HANDS COMM' FOUNDATION LTD ATF
ABN 14 160 630 491

Contents

Compilation Report

Detailed Profit and Loss Statement

Statement of Financial Position

Notes to the Financial Statements

Directors' Declaration

INTO OUR HANDS - OPEN FUND
INTO OUR HANDS COMM' FOUNDATION LTD ATF
ABN 14 160 630 491
Compilation Report to INTO OUR HANDS - OPEN FUND

We have compiled the accompanying special purpose financial statements of INTO OUR HANDS - OPEN FUND, which comprise the balance sheet as at 30 June 2021, the Statement of Profit and Loss for the year then ended, a summary of significant accounting policies and other explanatory notes. The specific purpose for which the special purpose financial statements have been prepared is set out in Note 1 to the financial statements.

The Responsibility of the Directors

The directors of INTO OUR HANDS - OPEN FUND are solely responsible for the information contained in the special purpose financial statements, the reliability, accuracy and completeness of the information and for the determination that the significant accounting policies used are appropriate to meet their needs and for the purpose that the financial statements were prepared.

Our Responsibility

On the basis of information provided by the directors, we have compiled the accompanying special purpose financial statements in accordance with the significant accounting policies as described in Note 1 to the financial statements and APES 315 Compilation of Financial Information.

We have applied our expertise in accounting and financial reporting to compile these financial statements in accordance with the significant accounting policies described in Note 1 to the financial statements. We have complied with the relevant ethical requirements of APES 110 Code of Ethics for Professional Accountants (including Independence Standards).

Assurance Disclaimer

Since a compilation engagement is not an assurance engagement, we are not required to verify the reliability, accuracy or completeness of the information provided to us by management to compile these financial statements. Accordingly, we do not express an audit opinion or a review conclusion on these financial statements.

The special purpose financial statements were compiled exclusively for the benefit of the directors who are responsible for the reliability, accuracy and completeness of the information used to compile them. Accordingly, these special purpose financial statements may not be suitable for other purposes. We do not accept responsibility for the contents of the special purpose financial statements.



AlpineTAX
PO BOX 403
MYRTLEFORD VIC

9 October, 2021

INTO OUR HANDS - OPEN FUND
INTO OUR HANDS COMM' FOUNDATION LTD ATF
ABN 14 160 630 491

Detailed Profit and Loss Statement
For the year ended 30 June 2021

	2021	2020
	\$	\$
<hr/>		
Income		
Administration Fee		1,200.00
Donations Received - Bushfire recovery		32,607.76
Donations Received Cudgewa & UpperMurray		54,205.52
Grants Received - ECSTRA Pt 2	50,000.00	
Grants Received - Bushfire Recovery	51,138.25	43,000.00
Grants Received - Dominoes		5,000.00
Grants Received - Give Wang		30,000.00
Interest received	40.59	67.60
Other Income	74,724.80	
Amer Auction Fund	17,950.00	
Total income	193,853.64	166,080.88
 Expenses		
Bank fees & charges		2.00
Processing Fees	513.10	75.42
FRRR Admin Fees	1,112.50	65.00
Grants Made - Bushfire Recovery	41,255.50	78,548.09
Grants made - Give Wangaratta		31,200.00
Grants Made - Indigo Power		40,000.00
Grants Made - Sub Funds	42,065.28	6,128.00
Total expenses	84,946.38	156,018.51
Profit from Ordinary Activities before income tax	108,907.26	10,062.37

INTO OUR HANDS - OPEN FUND
INTO OUR HANDS COMM' FOUNDATION LTD ATF
ABN 14 160 630 491
Statement of Financial Position as at 30 June 2021

	Note	2021 \$	2020 \$
Assets			
Current Assets			
Cash assets		159,131.60	50,224.34
Total Current Assets		<u>159,131.60</u>	<u>50,224.34</u>
Total Assets		<u>159,131.60</u>	<u>50,224.34</u>
Net Assets		<u><u>159,131.60</u></u>	<u><u>50,224.34</u></u>
Equity			
Retained profits		159,131.60	50,224.34
Total Equity		<u><u>159,131.60</u></u>	<u><u>50,224.34</u></u>

INTO OUR HANDS - OPEN FUND
INTO OUR HANDS COMM' FOUNDATION LTD ATF
ABN 14 160 630 491

Notes to the Financial Statements
For the year ended 30 June 2021

Note 1: Summary of Significant Accounting Policies

Basis of Preparation

The directors have prepared the financial statements on the basis that the company is a non-reporting entity because there are no users dependent on general purpose financial statements. The financial statements are therefore special purpose financial statements that have been prepared in order to meet the needs of members.

The financial statements have been prepared in accordance with the significant accounting policies disclosed below, which the directors have determined are appropriate to meet the needs of members. Such accounting policies are consistent with the previous period unless stated otherwise.

The financial statements have been prepared on an accrual basis and are based on historical costs unless otherwise stated in the notes. The accounting policies that have been adopted in the preparation of the statements are as follows:

(a) Impairment of Assets

At the end of each reporting period, property, plant and equipment, intangible assets and investments are reviewed to determine whether there is any indication that those assets have suffered an impairment loss. If there is an indication of possible impairment, the recoverable amount of any affected asset (or group of related assets) is estimated and compared with its carrying amount. The recoverable amount is the higher of the asset's fair value less costs of disposal and the present value of the asset's future cash flows discounted at the expected rate of return. If the estimated recoverable amount is lower, the carrying amount is reduced to the estimated recoverable amount and an impairment loss is recognised immediately in profit or loss.

(b) Cash and Cash Equivalents

Cash and cash equivalents include cash on hand, deposits held at call with banks, other short-term highly liquid investments with original maturities of three months or less, and bank overdrafts. Bank overdrafts are shown within borrowings in current liabilities on the balance sheet.

(c) Revenue and Other Income

Revenue is measured at the value of the consideration received or receivable after taking into account any trade discounts and volume rebates allowed. For this purpose, deferred consideration is not discounted to present values when recognising revenue.

Interest revenue is recognised using the effective interest rate method, which, for floating rate financial assets, is the rate inherent in the instrument. Dividend revenue is recognised when the right to receive a dividend has been established.

INTO OUR HANDS - OPEN FUND
INTO OUR HANDS COMM' FOUNDATION LTD ATF
ABN 14 160 630 491
Notes to the Financial Statements
For the year ended 30 June 2021

Revenue recognised related to the provision of services is determined with reference to the stage of completion of the transaction at the end of the reporting period and where outcome of the contract can be estimated reliably. Stage of completion is determined with reference to the services performed to date as a percentage of total anticipated services to be performed. Where the outcome cannot be estimated reliably, revenue is recognised only to the extent that related expenditure is recoverable.

All revenue is stated net of the amount of goods and services tax (GST).

(d) Goods and Services Tax (GST)

Revenues, expenses and assets are recognised net of the amount of GST, except where the amount of GST incurred is not recoverable from the Australian Taxation Office (ATO). In these circumstances, the GST is recognised as part of the cost of acquisition of the asset or as part of an item of the expense. Receivables and payables in the balance sheet are shown inclusive of GST.

Cash flows are presented in the cash flow statement on a gross basis, except for the GST components of investing and financing activities, which are disclosed as operating cash flows.

INTO OUR HANDS - OPEN FUND
INTO OUR HANDS COMM' FOUNDATION LTD ATF
ABN 14 160 630 491
Directors' Declaration

The directors have determined that the company is not a reporting entity and that this special purpose financial report should be prepared in accordance with the accounting policies prescribed in Note 1 to the financial statements.

The directors of the company declare that:

1. the financial statements and notes, present fairly the company's financial position as at 30 June 2021 and its performance for the year ended on that date in accordance with the accounting policies described in Note 1 to the financial statements;
2. in the directors' opinion, there are reasonable grounds to believe that the company will be able to pay its debts as and when they become due and payable.

This declaration is made in accordance with a resolution of the Board of Directors.



Ruth Kneebone
Director



Bart Crawley (Nov 4, 2021 09:03 GMT+11)

Bart Crawley
Director

Dated: Oct 13, 2021

INDEPENDENT AUDITOR'S REPORT
Into Our Hands Community Foundation Ltd

We have audited the accompanying financial report of Into Our Hands Community Foundation Ltd., which comprises the statement of financial position as at 30th June 2021 and the statement of comprehensive income for the year then ended, statement of changes in equity and statement of cash flows for the year then ended, notes comprising a summary of significant accounting policies and other explanatory information and the directors' declaration.

Directors' responsibility for the financial report

The directors of the company are responsible for the preparation of the financial report that gives a true and fair view in accordance with Australian Accounting Standards and the *Corporations Act 2001* and for such internal control as the directors determine is necessary to enable the preparation of the financial report that gives a true and fair view and is free from material misstatement, whether due to fraud or error.

Auditor's responsibility

Our responsibility is to express an opinion on the financial report based on our audit. We conducted our audit in accordance with Australian Auditing Standards. Those standards require that we comply with relevant ethical requirements relating to audit engagements and plan and perform the audit to obtain reasonable assurance about whether the financial report is free from material misstatement. An audit involves performing procedures to obtain audit evidence about the amounts and disclosures in the financial report. The procedures selected depend on the auditor's judgement, including the assessment of the risks of material misstatement of the financial report, whether due to fraud or error. In making those risk assessments, the auditor considers internal control relevant to the company's preparation of the financial report that gives a true and fair view in order to design audit procedures that are appropriate in the circumstances, but not for the purpose of expressing an opinion on the effectiveness of the company's internal control. An audit also includes evaluating the appropriateness of accounting policies used and the reasonableness of accounting estimates made by the directors, as well as evaluating the overall presentation of the financial report. We believe that the audit evidence we have obtained is sufficient and appropriate to provide a basis for our audit opinion.

Independence

In conducting our audit, we have complied with the independence requirements of the *Corporations Act 2001*. We confirm that the independence declaration required by the *Corporations Act 2001*, which has been given to the directors of Into Our Hands Community Foundation Ltd. would be in the same terms if given to the directors as at the time of this auditor's report.

Opinion

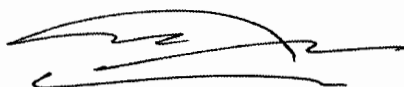
In our opinion:

- (a) the financial report of Into Our Hands Community Foundation Ltd. is in accordance with the *Corporations Act 2001*, including:
- (i) giving a true and fair view of the company's [registered scheme's/disclosing entity's] financial position as at 30th June 2021 and of its performance for the year ended on that date; and
 - (ii) complying with Australian Accounting Standards and the *Corporations Regulations 2001*; and

Compliance with Trust Deed

In our opinion, the Trustee (where applicable), has complied with the following sections of the Trust Deed: Clause's 4.6; 5.1; 8.4; 8.5

Dated at MYRTLEFORD this 18th November 2021



..... (Signed)

SAM P MAROTTA - GD (Acctg); Fellow NTAA; RTA; JP

REGISTERED COMPANY AUDITOR. Reg No: 8799

18 November 2021

91 Standish Street

Myrtleford VIC 3737

Telephone: 03-57511411

**INTO OUR HANDS - PUBLIC FUND
INTO OUR HANDS COMM' FOUNDATION LTD ATF
ABN 74 193 767 461**

**Financial Statements
For the year ended 30 June 2021**



AlpineTAX
PO BOX 403
MYRTLEFORD VIC 3737

Phone: 5751 1411 Fax: 5751 1416
Email: admin@alpinetax.com.au Website: www.alpinetax.com.au

INTO OUR HANDS - PUBLIC FUND
INTO OUR HANDS COMM' FOUNDATION LTD ATF
ABN 74 193 767 461

Contents

Compilation Report

Detailed Profit and Loss Statement

Detailed Balance Sheet

Notes to the Financial Statements

Trustees' Declaration

INTO OUR HANDS - PUBLIC FUND
INTO OUR HANDS COMM' FOUNDATION LTD ATF
ABN 74 193 767 461

Compilation Report to INTO OUR HANDS - PUBLIC FUND

We have compiled the accompanying special purpose financial statements of INTO OUR HANDS - PUBLIC FUND, which comprise the balance sheet as at 30 June 2021, the Statement of Profit and Loss for the year then ended, a summary of significant accounting policies and other explanatory notes. The specific purpose for which the special purpose financial statements have been prepared is set out in Note 1 to the financial statements.

The Responsibility of the Directors

The directors of INTO OUR HANDS - PUBLIC FUND are solely responsible for the information contained in the special purpose financial statements, the reliability, accuracy and completeness of the information and for the determination that the significant accounting policies used are appropriate to meet their needs and for the purpose that the financial statements were prepared.

Our Responsibility

On the basis of information provided by the directors, we have compiled the accompanying special purpose financial statements in accordance with the significant accounting policies as described in Note 1 to the financial statements and APES 315 Compilation of Financial Information.

We have applied our expertise in accounting and financial reporting to compile these financial statements in accordance with the significant accounting policies described in Note 1 to the financial statements. We have complied with the relevant ethical requirements of APES 110 Code of Ethics for Professional Accountants (including Independence Standards).

Assurance Disclaimer

Since a compilation engagement is not an assurance engagement, we are not required to verify the reliability, accuracy or completeness of the information provided to us by management to compile these financial statements. Accordingly, we do not express an audit opinion or a review conclusion on these financial statements.

The special purpose financial statements were compiled exclusively for the benefit of the directors who are responsible for the reliability, accuracy and completeness of the information used to compile them. Accordingly, these special purpose financial statements may not be suitable for other purposes. We do not accept responsibility for the contents of the special purpose financial statements.



AlpineTAX
PO BOX 403
MYRTLEFORD VIC

9 October, 2021

INTO OUR HANDS - PUBLIC FUND
INTO OUR HANDS COMM' FOUNDATION LTD ATF
ABN 74 193 767 461

Detailed Profit and Loss Statement
For the year ended 30 June 2021

	2021	2020
	\$	\$
<hr/>		
Income		
Donations - Bushfire 2020	4,263.00	4,246.00
Donations - Give Wangaratta	17,115.00	5,416.00
Donations	12,008.00	7,836.00
Donations - TRY		30,722.00
Gary Nash & Co Community Fund	17,650.00	
Mt Buffalo Chalet Receipts	1.00	4.00
Interest received	9.00	57.00
Other income		2,510.00
Total income	51,046.00	50,791.00
 Expenses		
Bank fees & charges	38.00	
Processing Fees	401.00	436.00
General expenses	1,000.00	
Grants Issued	1,500.00	46,178.00
Total expenses	2,939.00	46,614.00
Profit from Ordinary Activities before income tax	48,107.00	4,177.00

INTO OUR HANDS - PUBLIC FUND
INTO OUR HANDS COMM' FOUNDATION LTD ATF
ABN 74 193 767 461
Detailed Balance Sheet as at 30 June 2021

	Note	2021 \$	2020 \$
<hr/>			
Current Assets			
Cash Assets			
Cash at bank		80,936.00	30,821.00
Mt Buffalo Chalet		3,011.00	3,041.00
Stripe AUD		24.00	2,002.00
		83,971.00	35,864.00
Total Current Assets		83,971.00	35,864.00
Total Assets		83,971.00	35,864.00
Net Assets		83,971.00	35,864.00
 Equity			
Retained profits / (accumulated losses)		83,971.00	35,864.00
Total Equity		83,971.00	35,864.00

INTO OUR HANDS - PUBLIC FUND
INTO OUR HANDS COMM' FOUNDATION LTD ATF
ABN 74 193 767 461

Notes to the Financial Statements
For the year ended 30 June 2021

Note 1: Summary of Significant Accounting Policies

Basis of Preparation

The directors have prepared the financial statements on the basis that the company is a non-reporting entity because there are no users dependent on general purpose financial statements. The financial statements are therefore special purpose financial statements that have been prepared in order to meet the needs of members.

The financial statements have been prepared in accordance with the significant accounting policies disclosed below, which the directors have determined are appropriate to meet the needs of members. Such accounting policies are consistent with the previous period unless stated otherwise.

The financial statements have been prepared on an accrual basis and are based on historical costs unless otherwise stated in the notes. The accounting policies that have been adopted in the preparation of the statements are as follows:

(a) Impairment of Assets

At the end of each reporting period, property, plant and equipment, intangible assets and investments are reviewed to determine whether there is any indication that those assets have suffered an impairment loss. If there is an indication of possible impairment, the recoverable amount of any affected asset (or group of related assets) is estimated and compared with its carrying amount. The recoverable amount is the higher of the asset's fair value less costs of disposal and the present value of the asset's future cash flows discounted at the expected rate of return. If the estimated recoverable amount is lower, the carrying amount is reduced to the estimated recoverable amount and an impairment loss is recognised immediately in profit or loss.

(b) Cash and Cash Equivalents

Cash and cash equivalents include cash on hand, deposits held at call with banks, other short-term highly liquid investments with original maturities of three months or less, and bank overdrafts. Bank overdrafts are shown within borrowings in current liabilities on the balance sheet.

(c) Revenue and Other Income

Revenue is measured at the value of the consideration received or receivable after taking into account any trade discounts and volume rebates allowed. For this purpose, deferred consideration is not discounted to present values when recognising revenue.

Interest revenue is recognised using the effective interest rate method, which, for floating rate financial assets, is the rate inherent in the instrument. Dividend revenue is recognised when the right to receive a dividend has been established.

INTO OUR HANDS - PUBLIC FUND
INTO OUR HANDS COMM' FOUNDATION LTD ATF
ABN 74 193 767 461

Notes to the Financial Statements
For the year ended 30 June 2021

Revenue recognised related to the provision of services is determined with reference to the stage of completion of the transaction at the end of the reporting period and where outcome of the contract can be estimated reliably. Stage of completion is determined with reference to the services performed to date as a percentage of total anticipated services to be performed.

Where the outcome cannot be estimated reliably, revenue is recognised only to the extent that related expenditure is recoverable.

All revenue is stated net of the amount of goods and services tax (GST).

(d) Goods and Services Tax (GST)

Revenues, expenses and assets are recognised net of the amount of GST, except where the amount of GST incurred is not recoverable from the Australian Taxation Office (ATO). In these circumstances, the GST is recognised as part of the cost of acquisition of the asset or as part of an item of the expense. Receivables and payables in the balance sheet are shown inclusive of GST.

Cash flows are presented in the cash flow statement on a gross basis, except for the GST components of investing and financing activities, which are disclosed as operating cash flows.

INTO OUR HANDS - PUBLIC FUND
INTO OUR HANDS COMM' FOUNDATION LTD ATF
ABN 74 193 767 461
Trustees' Declaration

The directors of INTO OUR HANDS COMMUNITY FOUNDATION LIMITED declare that the trust is not a reporting entity and that this special purpose financial report should be prepared in accordance with the accounting policies outlined in Note 1 to the financial statements

The directors of the trustee company declare that:

- (i) the financial statements and notes, present fairly the trust's financial position as at 30 June 2021 and its performance for the year ended on that date in accordance with the accounting policies described in Note 1 to the financial statements; and
- (ii) in the directors' opinion there are reasonable grounds to believe that the trust will be able to pay its debts as and when they become due and payable.

The declaration is made in accordance with a resolution of the Board of Directors of the trustee company.



RUTH KNEEBONE , (Director)



Bart Crawley (Nov 4, 2021 09:02 GMT+11)

BART CRAWLEY , (Director)

Date Oct 13, 2021

**INTO OUR HANDS - CHARITABLE TRUST
INTO OUR HANDS COMM' FOUNDATION LTD ATF
ABN 78 684 937 763**

**Financial Statements
For the year ended 30 June 2021**



AlpineTAX
PO BOX 403
MYRTLEFORD VIC 3737

Phone: 5751 1411 Fax: 5751 1416
Email: admin@alpinetax.com.au Website: www.alpinetax.com.au

**INTO OUR HANDS - CHARITABLE TRUST
INTO OUR HANDS COMM' FOUNDATION LTD ATF
ABN 78 684 937 763**

Contents

Compilation Report

Detailed Profit and Loss Statement

Balance Sheet

Directors' Declaration

INTO OUR HANDS - CHARITABLE TRUST
INTO OUR HANDS COMM' FOUNDATION LTD ATF
ABN 78 684 937 763

Compilation Report to INTO OUR HANDS - CHARITABLE TRUST

We have compiled the accompanying special purpose financial statements of INTO OUR HANDS - CHARITABLE TRUST, which comprise the balance sheet as at 30 June 2021, the Statement of Profit and Loss for the year then ended, a summary of significant accounting policies and other explanatory notes. The specific purpose for which the special purpose financial statements have been prepared is set out in Note 1 to the financial statements.

The Responsibility of the Directors

The directors of INTO OUR HANDS - CHARITABLE TRUST are solely responsible for the information contained in the special purpose financial statements, the reliability, accuracy and completeness of the information and for the determination that the significant accounting policies used are appropriate to meet their needs and for the purpose that the financial statements were prepared.

Our Responsibility

On the basis of information provided by the directors, we have compiled the accompanying special purpose financial statements in accordance with the significant accounting policies as described in Note 1 to the financial statements and APES 315 Compilation of Financial Information.

We have applied our expertise in accounting and financial reporting to compile these financial statements in accordance with the significant accounting policies described in Note 1 to the financial statements. We have complied with the relevant ethical requirements of APES 110 Code of Ethics for Professional Accountants (including Independence Standards).

Assurance Disclaimer

Since a compilation engagement is not an assurance engagement, we are not required to verify the reliability, accuracy or completeness of the information provided to us by management to compile these financial statements. Accordingly, we do not express an audit opinion or a review conclusion on these financial statements.

The special purpose financial statements were compiled exclusively for the benefit of the directors who are responsible for the reliability, accuracy and completeness of the information used to compile them. Accordingly, these special purpose financial statements may not be suitable for other purposes. We do not accept responsibility for the contents of the special purpose financial statements.



AlpineTAX
PO BOX 403
MYRTLEFORD VIC

9 October, 2021

INTO OUR HANDS - CHARITABLE TRUST
INTO OUR HANDS COMM' FOUNDATION LTD ATF

ABN 78 684 937 763

Detailed Profit and Loss Statement

For the year ended 30 June 2021

	2021	2020
	\$	\$
<hr/>		
Income		
Activities Income	74,882.00	10,000.00
Donations Received	234.00	180.00
Grants - FRRR	42,125.00	1,620.00
Grants Rec'd -Realising Our Prosperity		11,382.00
Grants Rec'd Realising Our Prosperity		115,000.00
Jobkeeper Supplements	16,410.00	
Interest received	490.00	2,139.00
Total income	134,141.00	140,321.00
Expenses		
Accountancy	17.00	
Administration		1,050.00
Advertising & promotion	410.00	4,648.00
Audit fees	2,500.00	2,150.00
Bank fees & charges	141.00	
Board Expenses	37.00	67.00
Conference/Seminar costs	154.00	1,973.00
Consumables	68.00	
Contractors EO	476.00	49,376.00
Contractors - Specialist Services	1,004.00	49,127.00
Entertainment	68.00	
FRRR Grant Admin Fees	63.00	1,375.00
Filing fees		17.00
Foundant CRM	11,286.00	
Fuel & oil	63.00	
General expenses	5,699.00	
Insurance	2,123.00	2,320.00
ITC Equipment	3,456.00	
Meeting Expenses	505.00	411.00
Postage	131.00	135.00
Printing & stationery	30.00	161.00

**These financial statements are unaudited. They must be read in conjunction with the attached Accountant's
Compilation Report and Notes which form part of these financial statements.**

INTO OUR HANDS - CHARITABLE TRUST
INTO OUR HANDS COMM' FOUNDATION LTD ATF
ABN 78 684 937 763

Detailed Profit and Loss Statement
For the year ended 30 June 2021

	2021	2020
	\$	\$
Processing Fees	34.00	375.00
Project Marketing	21,906.00	
Rent on land & buildings	1,800.00	
Scholarships	5,250.00	5,250.00
Subscriptions	5,033.00	1,450.00
Superannuation	9,608.00	1,700.00
Telephone	551.00	710.00
Training	300.00	
Travel, accommodation & conference	853.00	
Wages	111,013.00	17,890.00
Website Design	7,989.00	670.00
Workers Compensation	1,366.00	408.00
Total expenses	<u>193,934.00</u>	<u>141,263.00</u>
Profit (Loss) from Ordinary Activities before income tax	<u><u>(59,793.00)</u></u>	<u><u>(942.00)</u></u>

INTO OUR HANDS - CHARITABLE TRUST
INTO OUR HANDS COMM' FOUNDATION LTD ATF
ABN 78 684 937 763

Balance Sheet as at 30 June 2021

	Note	2021 \$	2020 \$
Assets			
Current Assets			
Cash assets		165,073.00	211,563.00
Current tax assets		3,161.00	5,394.00
Total Current Assets		168,234.00	216,957.00
Non-Current Assets			
Other			306.00
Total Non-Current Assets			306.00
Total Assets		168,234.00	217,263.00
Liabilities			
Current Liabilities			
Payables		4,630.00	715.00
Financial liabilities		5,675.00	
Current tax liabilities		9,909.00	5,812.00
Provisions		2,644.00	5,567.00
Total Current Liabilities		22,858.00	12,094.00
Total Liabilities		22,858.00	12,094.00
Net Assets		145,376.00	205,169.00
Equity			
Retained profits		145,376.00	205,169.00
Total Equity		145,376.00	205,169.00


INTO OUR HANDS - CHARITABLE TRUST
INTO OUR HANDS COMM' FOUNDATION LTD ATF
ABN 78 684 937 763
Directors' Declaration

The directors have determined that the company is not a reporting entity and that this special purpose financial report should be prepared in accordance with the accounting policies prescribed in Note 1 to the financial statements.

The directors of the company declare that:

1. the financial statements and notes, present fairly the company's financial position as at 30 June 2021 and its performance for the year ended on that date in accordance with the accounting policies described in Note 1 to the financial statements;
2. in the directors' opinion, there are reasonable grounds to believe that the company will be able to pay its debts as and when they become due and payable.

This declaration is made in accordance with a resolution of the Board of Directors.



Ruth Kneebone
Director



[Bart Crawley \(Oct 20, 2021 12:07 GMT+11\)](#)

Bart Crawley
Treasurer

14 October 2021

Dated: Oct 14, 2021



Office Address

21a Docker Street
Wangaratta
VIC Australia 3677

PO Box

PO Box 586
Myrtleford
VIC Australia 3736

Tel
Email
Website

0466 252 866
info@intoourhands.com.au
www.intoourhandsfoundation.com.au